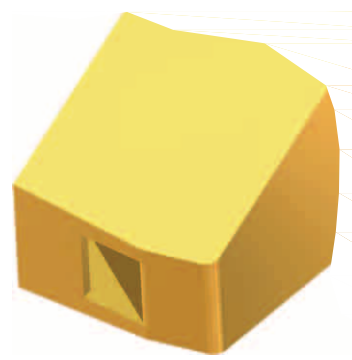
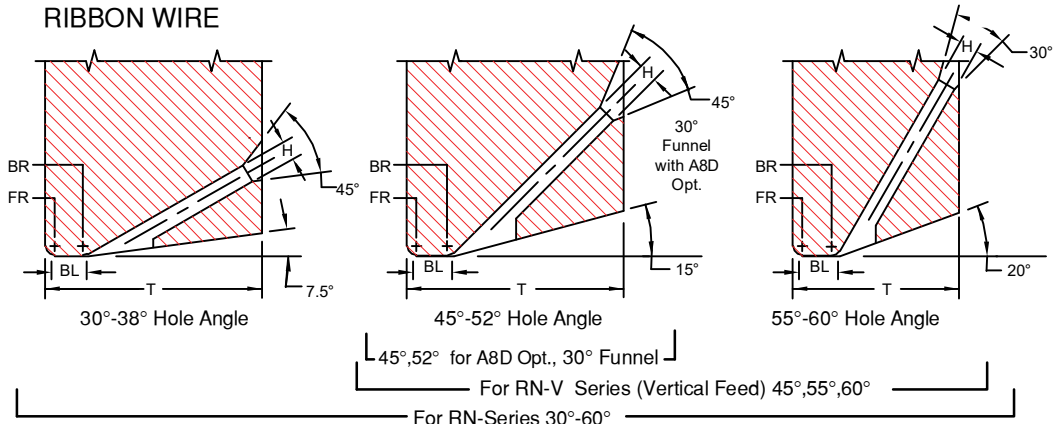


SERIES RN & RN-V

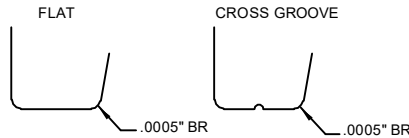
RIBBON WIRE

FOR AUTOMATIC BONDERS



Available Vertical Hole Ø marked with X

	TD		TDF		For Vertical Hole
	in.	mm	in.	mm	
1/16	.0624	1.59	.0460	1.17	
1/16	.0624	1.59	.0590	1.50	X
	.0784	1.99	.0630	1.60	
	.0784	1.99	.0720	1.83	X
3/32	.0937	2.38	.0880	2.24	X
	.1180	3.00	.0985	2.50	
1/8	.1249	3.17	.0937	2.38	
1/8	.1249	3.17	.1180	3.00	

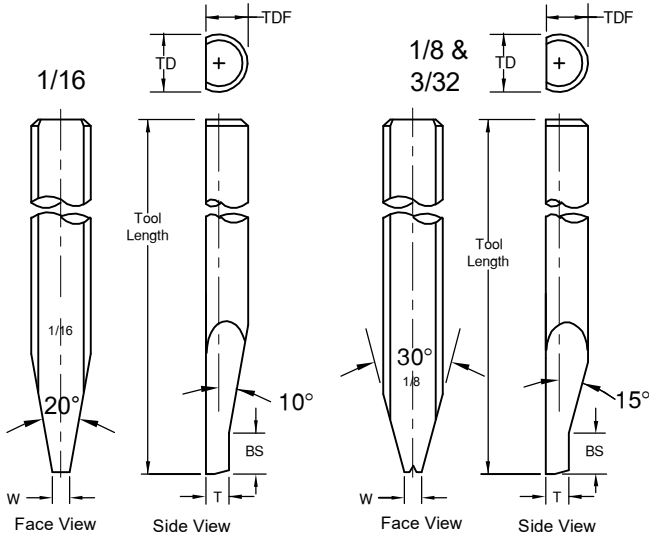


We recommend a .0005" back radius and a cross groove or a flat bond foot when ordering tools for gold wire thermosonic bonding. For more gold wire application information see **Tech Tip**

RN-SERIES

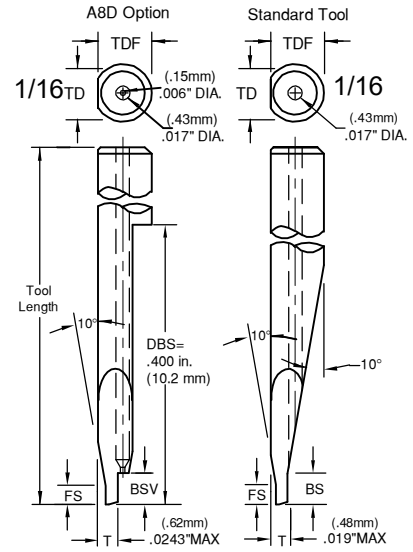
Ribbon Width: .0020" through .030"
Ribbon Thickness: .00025" through .0020"

For large Ø



RN-V SERIES VERTICAL FEED DEEP ACCESS

Ribbon Width: .0020" through .030", Ribbon Thickness: .00025" through .0020"



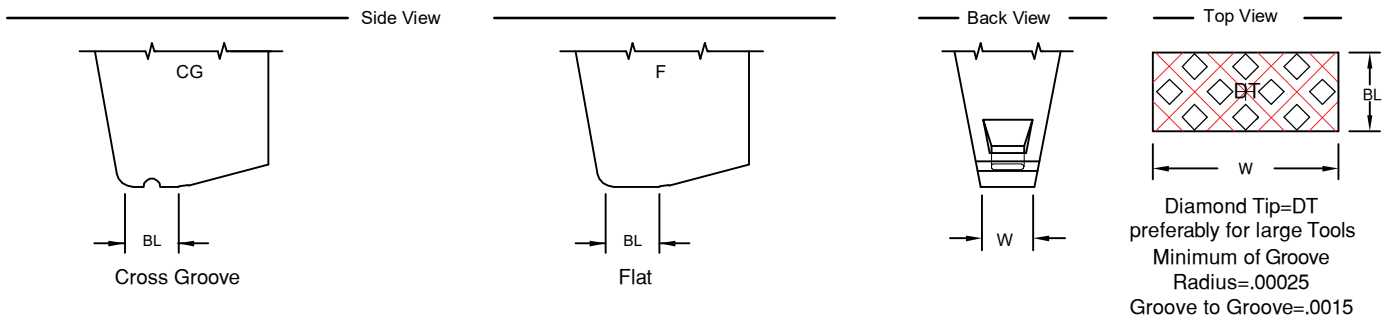
NOTE: We recommend our A8D option for enhanced wire control. Our standard vertical feed has slightly more clearance but less wire control. See Tool Option for illustration. To order just add A8D in space 12.

A8D Option

Hole Angle	BSV	
	in.	mm
45°	.035	.89
52°	.050	1.27

Standard: Ø 1/16, 45° to 52° Hole Angle : BS"=.045" (1.14mm) .
Supplies only to Standard size Ø1/16, larger tool Ø are different.
Standard: (BS) supplied unless otherwise specified. See Tool Options #A3

Standard: Ø1/16 45° to 52° Hole Angle :
FS=.015"(.38mm) BS"=.045" (1.14mm)
Standard: (FS&BS) supplied unless otherwise specified. See Tool Options
No FS if T=MAX



SERIES RN & RN-V

RIBBON WIRE

ORDERING INFORMATION
RIBBON BONDING WEDGES
FOR GOLD AND ALUMINUM WIRE

SAMPLE PART NUMBER: M- RN-O-D-1/16-1-45-CG-.5x5-2-M- *

SYMBOL EXPLANATION: 1 2 3 4 5 6 7 8 9 10 11 12

- MATERIAL:**
 - M = Ceramic
 - C = Tungsten Carbide
 - T = Titanium
 - All other: See Material Selection Guide
- SERIES:** RN
- WIRE FEED:** O = Standard Feed
V = Vertical Feed
- FRONT/BACK RADIUS:** See Radius Option Chart
*For special Radius sizes insert an X Please specify FR/BR
- SHANK DIA.:** Please Specify Diameter
- TOOL LENGTH:** Please Specify Length
- HOLE ANGLE:** for RN (30°, 38°, 45°, 52°, 55°, 60°) for RN-V (45°, 55°, 60°)
for RN-V with A8D Opt.(45°, 52°)

(12) See Tool Option

(11) **FOOT FINISH:**
M = Matte finish (FR, BR, & Bond Flat)
P = Polish finish (FR, BR, & Bond Flat)
MP = Polish finish (FR, BR), and Matte finish (Bond Flat)

(10) **Bond Length:** See Standard Chart
 Example: BL of .0020 = 2
 Note: We do not recommend bond lengths any larger than .005".

(9) **RIBBON SIZE:** See Standard Chart
 Example: .0005 x .005 = .5 x 5
 Thickness x Width

(8) **FOOT TYPE:** **F** = Flat
CG = Cross Groove
DT = Diamond Tip
 (Please specify Ribbon size)

For special sizes or dimensions insert an (X) in the appropriate position of the part number then specify what (X) equals. Example: M-RN-O-X-1/16-3/4-45-CG-.5x5-2-M-A7 (X) FR=.0012, BR=.0007

RADIUS OPTION CHART	OPTION LETTER		A	B	C	D	E	F	G	H	I	J	K	L	M	N
	FRONT RADIUS	in.	.0005	.0005	.0010	.0010	.0010	.0015	.0015	.0015	.0015	.0020	.0020	.0020	.0020	.0020
	BACK RADIUS	μ	13	13	25	25	25	38	38	38	38	51	51	51	51	51
	in.	0	.0005	0	.0005	.0010	0	.0005	.0010	.0015	0	.0005	.0010	.0015	.0020	
	μ	0	13	0	13	25	0	13	25	38	0	13	25	38	51	

For Vertical Feed: Tmax. for Dia. 1/16 = .0190 and for A8D: Tmax=.0243, Supplies only to Standard size Ø1/16, larger tool Ø are different.

Size Restrictions for Vertical Feed Tools			STANDARD CHART RN								
STANDARD			FOR RIBBON THICKNESS: .00025" THROUGH .0020" WIDTHS: .002" THROUGH .030"								
TD	Maximum Ribbon Width	Maximum "T" Dimension	RIBBON WIDTH	RIBBON THICKNESS	BL	T(30°38°)	T(45° 52°)	T(55° 60°)	W		
1/16	.0150	.0190	.0020	51	.00025 through .00125	6.4	in. μ	in. μ	in. μ	.0055	140
3/32	.0300	.0210					±.0002 ±.05	±.0005 ±.13	±.0005 ±.13		
A8D Option, RW up to .0070			.0030	76	.00025 through .00125	6.4	in. μ	in. μ	in. μ	.0065	165
1/16	.0070	.0243					±.0002 ±.05	±.0005 ±.13	±.0005 ±.13		
A8D Option, RW .0080 and larger			.0040	102	.00025 through .00125	6.4	in. μ	in. μ	in. μ	.0075	191
1/16	.0120	.0190					±.0002 ±.05	±.0005 ±.13	±.0005 ±.13		
Larger Tool Ø, Ribbon Width and "T" Dimensions available upon request			.0050	127	.0005 through .0020	13	in. μ	in. μ	in. μ	.0085	216
1/16	.0120	.0190					±.0002 ±.05	±.0005 ±.13	±.0005 ±.13		
RW = Ribbon Width			.0070	178	.0005 through .0020	13	in. μ	in. μ	in. μ	.0125	318
1/16	.0120	.0190					±.0002 ±.05	±.0005 ±.13	±.0005 ±.13		
RW = Ribbon Width			.0100	254	.0005 through .0020	13	in. μ	in. μ	in. μ	.0155	394
1/16	.0120	.0190					±.0002 ±.05	±.0005 ±.13	±.0005 ±.13		
RW = Ribbon Width			.0120	305	.0005 through .0020	13	in. μ	in. μ	in. μ	.0175	445
1/16	.0120	.0190					±.0002 ±.05	±.0005 ±.13	±.0005 ±.13		
RW = Ribbon Width			.0150	381	.0005 through .0020	13	in. μ	in. μ	in. μ	.0205	521
1/16	.0120	.0190					±.0002 ±.05	±.0005 ±.13	±.0005 ±.13		
RW = Ribbon Width			.0200	508	.0005 through .0020	13	in. μ	in. μ	in. μ	.0255	648
1/16	.0120	.0190					±.0002 ±.05	±.0005 ±.13	±.0005 ±.13		

*Other sizes available upon request *All dimensions and tolerances are for reference only
 "T" To be determined according to the size of FR and BR and Hole Bore Length