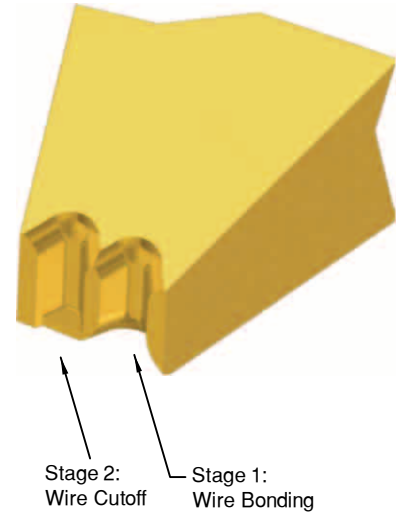
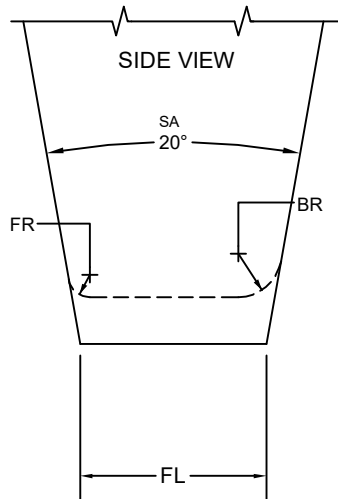
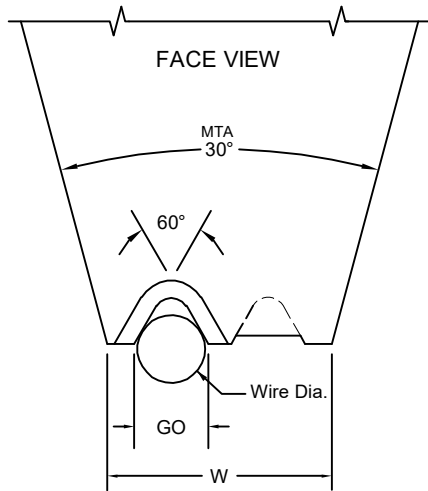


SERIES OGQ

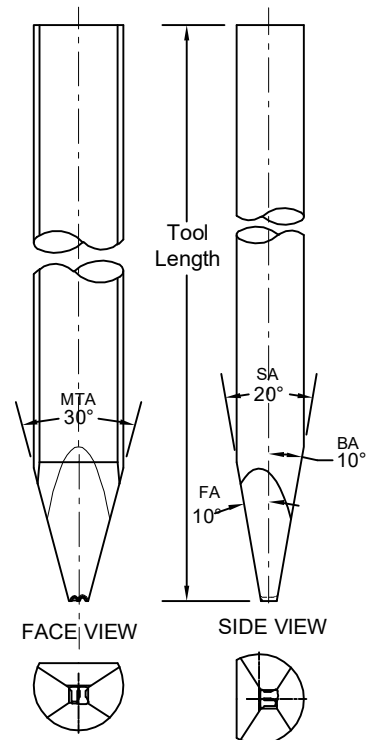
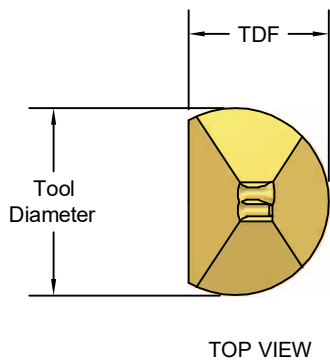
Twin Groove Tool



MTA = MAIN TAPER ANGLE
 SA = SIDE-VIEW ANGLE
 BA = BACK ANGLE
 FA = FRONT ANGLE
 GO = GROOVE OPENING

Special dimensions available upon request.
 Dimensions not shown please specify.

	TD		TDF	
	in.	mm	in.	mm
1/8	.1249	3.17	.0937	2.38



SERIES OGQ

Twin Groove Tool

STANDARD TOOL NUMBER WIRE SIZE 4 TILL 24

SAMPLE PART NUMBER: M-OGQ-8-1/8-2-60-MP-*

SYMBOL EXPLANATION: 1 2 3 4 5 6 7 8

1. **MATERIAL:** _____
 M = Ceramic
 C = Tungsten Carbide
 T = Titanium Tip Carbide Shank
 All other:
 See Material Selection Guide

2. **SERIES:** OGQ _____

3. **WIRE SIZE:** 4....10....20 etc. Please specify _____

4. **TOOL DIAMETER:** Please specify _____

5. **TOOL LENGTH:** (L) Please specify _____

6. **GROOVE ANGLE:** (60° or 70°) Please specify _____

7. **FOOT FINISH (FF):** Please specify _____
 M = Matte finish (FR, BR, & Bond Flat)
 P = Polish finish (FR, BR, & Bond Flat)
 MP= Standard: Polish finish (FR, BR)
 and Matte finish (Bond Flat)

8. **OPTION:**
TOOL ANGLE: (MTA)
and other Option
 Please specify
 MTA=MAIN TAPER ANGLE
 BA=BACK-ANGLE
 FA=FRONT-ANGLE
 SA = SIDE-VIEW ANGLE
 STANDARD:
 MTA=30°, SA=20° =Empty field

TOOL NUMBER FOR CUSTOMIZED TOOLS

SAMPLE PART NUMBER: M-OGQ-8-1/8-2-60-.0260X.0220-MP-G5-N5-*

SYMBOL EXPLANATION: 1 2 3 4 5 6 7 8 9 10 11 12

1. **MATERIAL:** _____
 M = Ceramic
 C = Tungsten Carbide
 T = Titanium Tip Carbide Shank
 All other:
 See Material Selection Guide

2. **SERIES:** OGQ _____

3. **WIRE SIZE:** 4....10....20 etc. Please specify _____

4. **TOOL DIAMETER:** Please specify _____

5. **TOOL LENGTH:** (L) Please specify _____

6. **GROOVE ANGLE:** (60°) Please specify _____

7. **FOOT WIDTH: (W)** Please specify _____

8. **FOOT LENGTH: (FL)** Please specify _____

9. **FOOT FINISH (FF):** Please specify _____
 M = Matte finish (FR, BR, & Bond Flat)
 P = Polish finish (FR, BR, & Bond Flat)
 MP= Polish finish (FR, BR), and
 Matte finish (Bond Flat)

12. **OPTION:**
TOOL ANGLE: (MTA)
and other OPTION
 Please specify
 MTA=MAIN TAPER ANGLE
 BA=BACK-ANGLE
 FA=FRONT-ANGLE
 SA = SIDE-VIEW ANGLE
 STANDARD:
 MTA=30°, SA=20° =Empty field

11. **FRONT/BACK RADIUS (FL):**
 Please specify A, B,C etc.
 See Option Chart below.

10. **BACK RADIUS (FL):**
 Please specify A, B,C etc.
 See Option Chart below.

OPTION CHART (10&11) RADIUS FOR FOOT LENGTH (FL)	OPTION LETTER	A	B	C	D	E	F	G	H	I	J	K	L	M	N	O	P	Q	R	S	T	U	V	W
		FRONT RADIUS	in.	.0000	.0010	.0020	.0030	.0040	.0050	.0060	.0070	.0080	.0090	.0100	.0110	.0120	.0130	.0140	.0150	.0160	.0170	.0180	.0190	.0200
BACK RADIUS	μ	0	25	51	76	102	127	152	178	203	229	254	279	305	330	356	381	406	432	457	483	508	533	559

EXAMPLE:
ALL OTHER RADIUS:

D = .0030 E = .0040 A1 to A9 = .0001-.0009
 D4 = .0034 E1 = .0041 B1 to B9 = .0011-.0019
 D5 = .0035 E2 = .0042 C1 to C9 = .0021-.0029
 D6 = .0036 E3 = .0043 D1 to D9 = .0031-.0039
 D7 = .0037 E4 = .0044 for all

EXAMPLE:
 Front Radius = .0065 = G5
 Back Radius = .0120 = M