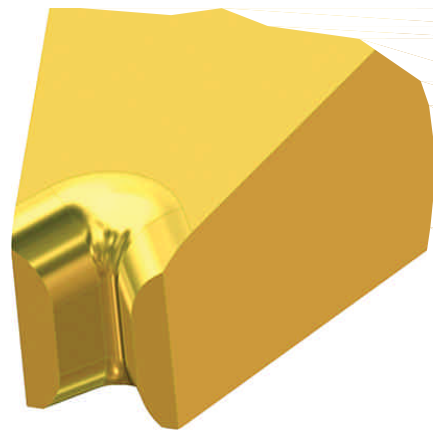
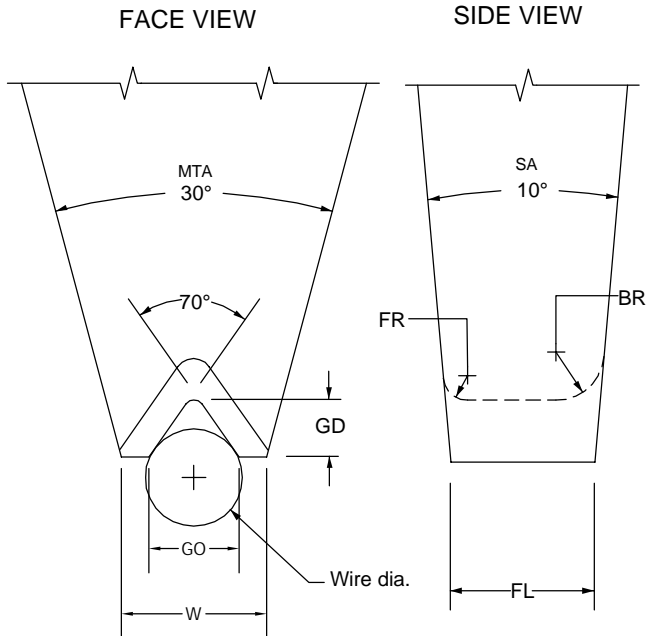


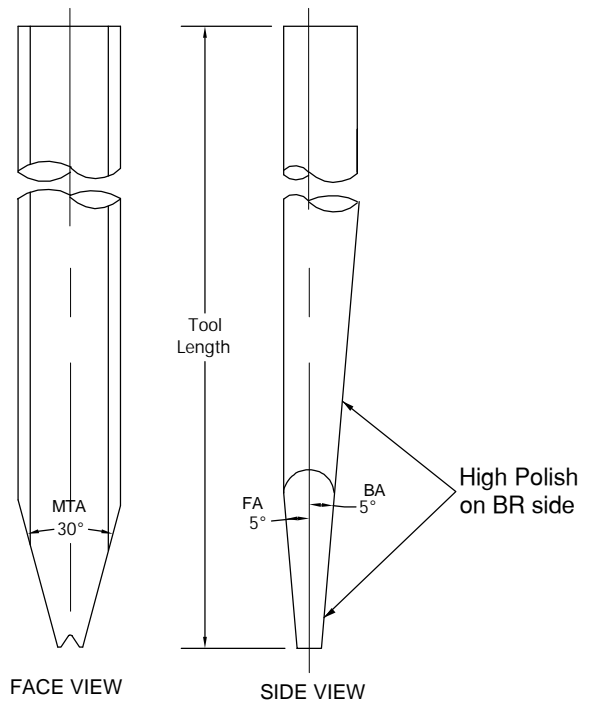
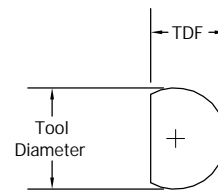
SERIES SIVG

LARGE WIRE, V GROOVE



MTA = MAIN TAPER ANGLE
 SA = SIDE-VIEW ANGLE
 BA = BACK ANGLE
 FA = FRONT ANGLE
 GO = GROOVE OPENING

	TD		TDF	
	in.	mm	in.	mm
1/8	.1249	3.17	.1100	2.79



SERIES SIVG

LARGE WIRE, V-GROOVE IN WIRE DIRECTION

ORDERING INFORMATION
LARGE WIRE BONDING WEDGES
FOR GOLD AND ALUMINUM WIRE

SAMPLE PART NUMBER: C-SIVG-20-1/8-2.50-70-M-1-*

SYMBOL EXPLANATION:

	1	2	3	4	5	6	7	8	9
1. MATERIAL:	_____								
	M = Ceramic C = Tungsten Carbide T = Titanium All other: Material Selection Guide Tech Tips								
2. SERIES: sivg	_____								
3. WIRE SIZE: See Standard Chart	_____								
4. TOOL DIAMETER: = .125" / 3.18 mm	_____								
5. TOOL LENGTH: = 2.50" / 63.5 mm	_____								
	9. See Tool Options EXAMPLE: A1 or VGC								
	8. REVISION # IF APPLICABLE EXAMPLE: LOOKUP SIVG-8 "(1)"								
	7. FOOT FINISH: M = Matte finish (FR, BR, & Bond Flat) P = Polish finish (FR, BR, & Bond Flat) MP = Polish finish (FR, BR), and Matte finish (Bond Flat)								
	6. GROOVE ANGLE: = 70°								

STANDARD CHART		SIVG LARGE WIRE: FOR WIRE DIAMETERS .0040" THROUGH .0200"												
Part and Revision #	FR		BR		GO		GD		FL		W		WD	
Units	in.	μ	in.	μ	in.	μ	in.	μ	in.	μ	in.	μ	in.	μ
Tolerance	(REF)		(REF)		±.0005	±13	±.0005	±13	±.0005	±13	±.0005	±13	±.0005	±13
					±.0003	±08								
SIVG-4	.0027	69	.0054	137	.0046	117	.0027	69	.0114	290	.0080	203	.0040	102
SIVG-5	.0034	86	.0068	173	.0057	145	.0034	86	.0142	361	.0100	254	.0050	127
SIVG-6	.0041	104	.0082	208	.0068	173	.0040	102	.0170	432	.0120	305	.0060	152
SIVG-6 (1)	.0041	104	.0082	208	.0068	173	.0040	102	.0148	376	.0120	305	.0060	152
SIVG-7	.0048	122	.0096	244	.0080	203	.0048	122	.0175	445	.0140	356	.0070	178
SIVG-8	.0054	137	.0109	277	.0091	231	.0055	140	.0226	574	.0160	406	.0080	203
SIVG-8 (1)	.0054	137	.0109	277	.0091	231	.0055	140	.0195	495	.0160	406	.0080	203
SIVG-10	.0068	173	.0136	345	.0122	310	.0075	191	.0250	635	.0200	508	.0100	254
SIVG-12	.0082	208	.0163	414	.0146	371	.0090	229	.0340	864	.0240	610	.0120	305
SIVG-12 (3)	.0082	208	.0163	414	.0146	371	.0090	229	.0294	747	.0240	610	.0120	305
SIVG-14	.0110	279	.0140	356	.0171	434	.0105	267	.0345	876	.0270	686	.0140	356
SIVG-15*	.0102	259	.0204	518	.0183	465	.0113	287	.0375	953	.0300	762	.0150	381
SIVG-16*	.0106	269	.0211	536	.0195	495	.0118	300	.0440	1118	.0320	813	.0160	406
SIVG-16* (1)	.0106	269	.0211	536	.0195	495	.0118	300	.0390	991	.0320	813	.0160	406
SIVG-16* (2)	.0106	269	.0211	536	.0195	495	.0118	300	.0335	851	.0320	813	.0160	406
SIVG-18*	.0122	310	.0245	622	.0220	559	.0140	356	.0360	914	.0360	914	.0180	457
SIVG-18*(1)	.0080	203	.0150	381	.0220	559	.0130	330	.0220	559	.0350	889	.0180	457
SIVG-20*	.0136	345	.0272	691	.0244	620	.0150	381	.0487	1237	.0400	1016	.0200	508
SIVG-20*(1)	.0080	203	.0130	330	.0240	610	.0150	381	.0330	838	.0330	838	.0200	508
SIVG-24	.0096	244	.0156	396	.0272	691	.0160	406	.0330	838	.0350	889	.0240	610

WD=WIRE Ø GO= GROOVE OPENING PLEASE SPECIFY WIRE SIZE AND WIRE MATERIAL WHEN ORDERING
*Other sizes available upon request *All dimensions and tolerances are for reference only