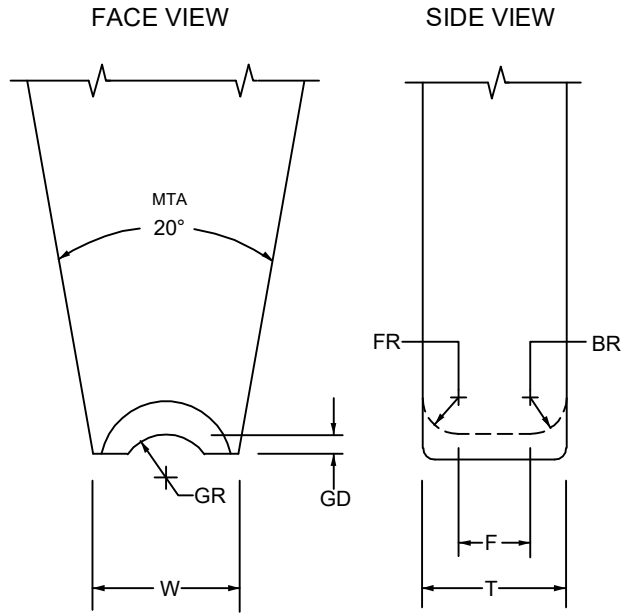


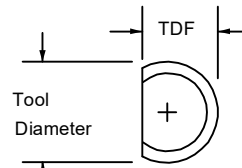
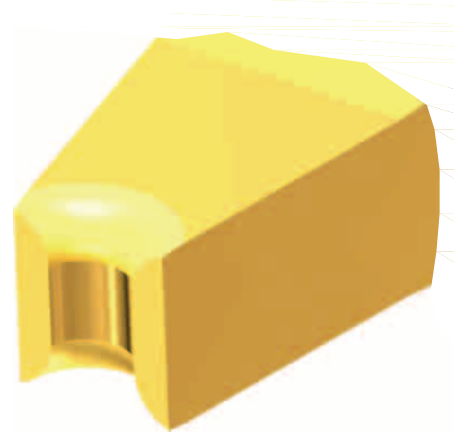
SERIES G

LARGE WIRE, U GROOVE

FOR MANUAL, AUTOMATIC AND SEMI-AUTOMATIC BONDERS



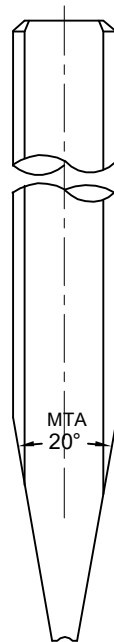
MTA = MAIN TAPER ANGLE
 SA = SIDE-VIEW ANGLE
 BA = BACK ANGLE
 FA = FRONT ANGLE



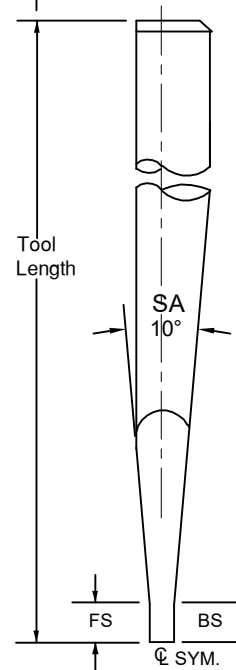
TDF" To be determined according to the "T" size

	TD		TDF	
	inch	mm	inch	mm
1/16	.0624	1.58	.0460	1.17
1/16	.0624	1.58	.0590	1.50
3/32	.0784	1.99	.0630	1.60
	.0937	2.38	.0880	2.24
1/8	.1180	3.00	.0985	2.50
	.1249	3.17	.0937	2.38
1/8	.1249	3.17	.1100	2.79
1/8	.1249	3.17	.1180	3.00

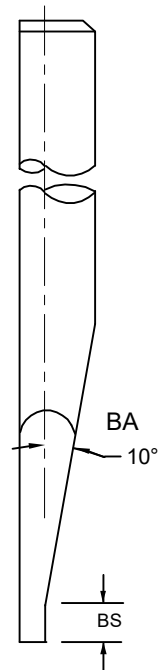
Standard Front Step and Back Step supplied unless otherwise specified. See **Tool Options** for other options. (A4, A5)



FACE VIEW



SIDE VIEW
 CENTER LINE
 (S=Standard)



SIDE VIEW
 'C' STYLE
 (O=Optional)

SERIES G

U-GROOVE IN WIRE DIRECTION
LARGE WIRE

ORDERING INFORMATION
LARGE WIRE BONDING WEDGES
FOR GOLD AND ALUMINUM WIRE

SAMPLE PART NUMBER: M-S-G-100-1-1/8-1.97-M-*

SYMBOL EXPLANATION: 1 2 3 4 5 6 7

1. **MATERIAL:**
 - M = Ceramic
 - C = Tungsten Carbide
 - T = Titanium
 - All other: See Material Selection
2. **S=** Standard, Center line
O = Optional, C Style
3. **PART NUMBER :** G
Wire Ø (100 in µ) and Revision Number (1)
4. **SHANK DIA.:** Please Specify Length
Select TD from chart on page
5. **TOOL LENGTH:**
Please Specify Length
6. **FOOT FINISH:**
 - M = Matte finish (FR, BR, & Bond Flat)
 - P = Polish finish (FR, BR, & Bond Flat)
 - MP= Polish finish (FR, BR), and Matte finish (Bond Flat)
7. See Tool Options

STANDARD CHART		G LARGE WIRE: FOR WIRE DIAMETERS .0040" THROUGH .0200"																
PART NUMBER	F		FR		BR		GR		GD		FS & BS		T		W		WD	
Units	in.	µ	µ	µ	in.	µ	in.	µ	in.	µ	in.	µ	in.	µ	in.	µ	in.	µ
Tolerance small Tools	(Ref)		±.0002	±5	±.0002	±5	±.0002	±5	±.0002	±5	±.0004	±10	±.0004	±10	±.0004	±10		
G-100-1	.0051	130											.0098	249				
G-100-2	.0057	145	.0024	61	.0024	61	.0024	61	.0016	41	.0390	991	.0104	264	.0098	249	.0040	102
G-100-3	.0063	160											.0110	279				
G-100-4	.0071	180											.0118	300				
G-125-1	.0059	150											.0118	300				
G-125-2	.0069	175	.0030	76	.0030	76	.0030	76	.0020	51	.0390	991	.0128	325	.0118	300	.0050	127
G-125-3	.0079	201											.0138	351				
G-125-4	.0089	226											.0148	376				
G-150-1	.0067	170											.0138	351				
G-150-2	.0077	196	.0035	89	.0035	89	.0035	89	.0024	61	.0390	991	.0148	376	.0138	351	.0060	152
G-150-3	.0091	231											.0161	409				
G-150-4	.0106	269											.0177	450				
G-175-1	.0075	191											.0157	399				
G-175-2	.0091	231	.0041	104	.0041	104	.0041	104	.0028	71	.0390	991	.0173	439	.0157	399	.0070	178
G-175-3	.0106	269											.0189	480				
G-175-4	.0124	315											.0207	526				
G-200-1	.0083	211											.0177	450				
G-200-2	.0102	259	.0047	119	.0047	119	.0047	119	.0031	79	.0390	991	.0197	500	.0197	500	.0080	203
G-200-3	.0122	310											.0217	551				
G-200-4	.0142	361											.0236	599				
G-250-1	.0098	249											.0217	551				
G-250-2	.0130	330	.0059	150	.0059	150	.0059	150	.0039	99	.0590	1499	.0248	630	.0217	551	.0100	254
G-250-3	.0150	381											.0268	681				
G-250-4	.0177	450											.0295	749				
G-300-1	.0114	290											.0256	650				
G-300-2	.0154	391	.0071	180	.0071	180	.0071	180	.0047	119	.0590	1499	.0295	749	.0236	599	.0120	305
G-300-3	.0181	460											.0323	820				
G-300-4	.0213	541											.0354	899				
G-350-1	.0134	340											.0300	762				
G-350-2	.0177	450	.0083	211	.0083	211	.0083	211	.0055	140	.0590	1499	.0343	871	.0276	701	.0140	356
G-350-3	.0213	541											.0378	960				
G-350-4	.0248	630											.0413	1049				
G-400-1	.0150	381											.0339	861				
G-400-2	.0205	521	.0095	241	.0095	241	.0095	241	.0063	160	.0590	1499	.0394	1001	.0315	800	.0160	406
G-400-3	.0244	620											.0433	1100				
G-400-4*	.0283	719											.0472	1199				
G-450-1	.0177	450											.0390	991				
G-450-2*	.0230	584	.0106	269	.0106	269	.0106	269	.0071	180	.0590	1499	.0445	1130	.0354	899	.0180	457
G-450-3*	.0272	691											.0484	1229				
G-450-4*	.0319	810											.0531	1349				
G-500-1	.0197	500											.0433	1100				
G-500-2*	.0256	650	.0118	300	.0118	300	.0118	300	.0079	201	.0590	1499	.0492	1250	.0394	1001	.0200	508
G-500-3*	.0303	770											.0539	1369				
G-500-4*	.0355	902											.0591	1501				

* = Must be "C" Style *Other sizes available upon request *All dimensions and tolerances are for reference only

WIRE DIAMETER =WD