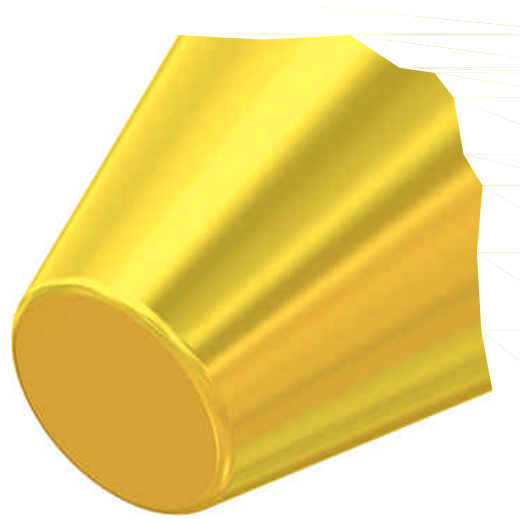
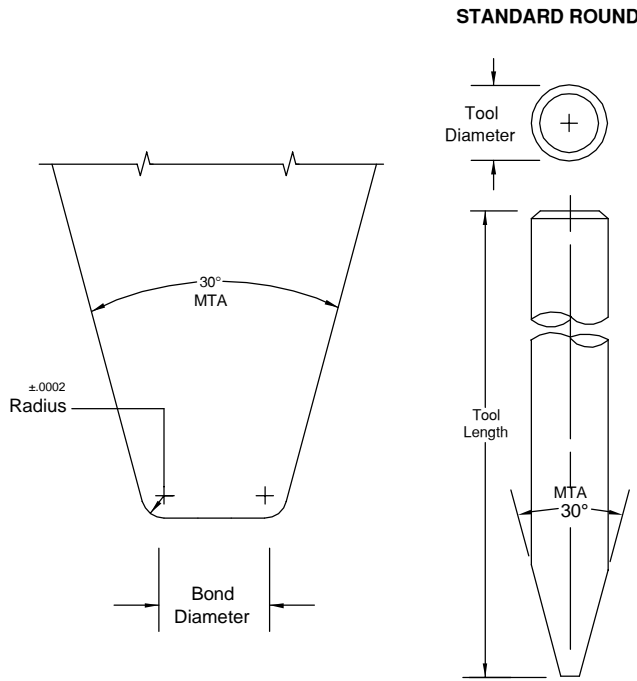


SERIES CT-107

Conical Tip Tab Tool

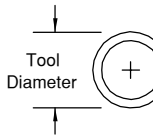


For Standard Round specify TD only
For Optional Flat specify TD and TDF

MTA = MAIN TAPER ANGLE

Special dimensions available upon request.
Dimensions not shown please specify.
We recommend ceramic material for all gold wire bonding for optimum results.

OPTIONAL FLAT



	TD		TDF	
	in.	mm	in.	mm
1/16	.0624	1.59	.0460	1.17
	.0784	1.99	.0630	1.60
3/32	.0937	2.38	.0880	2.24
	.1180	3.00	.0985	2.50
1/8	.1249	3.17	.0937	2.38
1/8	.1249	3.17	.1180	3.00

SAMPLE PART NUMBER: M-CT-107-1/16-1-.001-M-C-*
SYMBOL EXPLANATION: 1 2 3 4 5 6 7 8 9

- 1. **MATERIAL:** _____
M = Ceramic
C = Tungsten Carbide
T = Titanium
All other: Material Selection Guide **Tool Tips**
- 2. **SERIES:** CT _____
- 3. **STYLE:** 107 _____
- 4. **TOOL DIAMETER:** Please specify _____
- 5. **TOOL LENGTH:** Please specify _____
- 6. **BOND DIAMETER:** Please specify (Includes 2/3 R)
- 7. **FOOT FINISH:**
M = Matte
P = Polished Radius
- 8. **RADIUS:** See Option Chart.
- 9. **Tool Option:**
Please specify MTA (Tool-Angle) or see **Tool Options**

RADIUS OPTION CHART	OPTION LETTER		A	C	F	J
	RADIUS	in. μ	.0005 13	.0010 25	.0015 38	.0020 51